

INSTRUMENT  
APPROACH  
CHART - ICAO

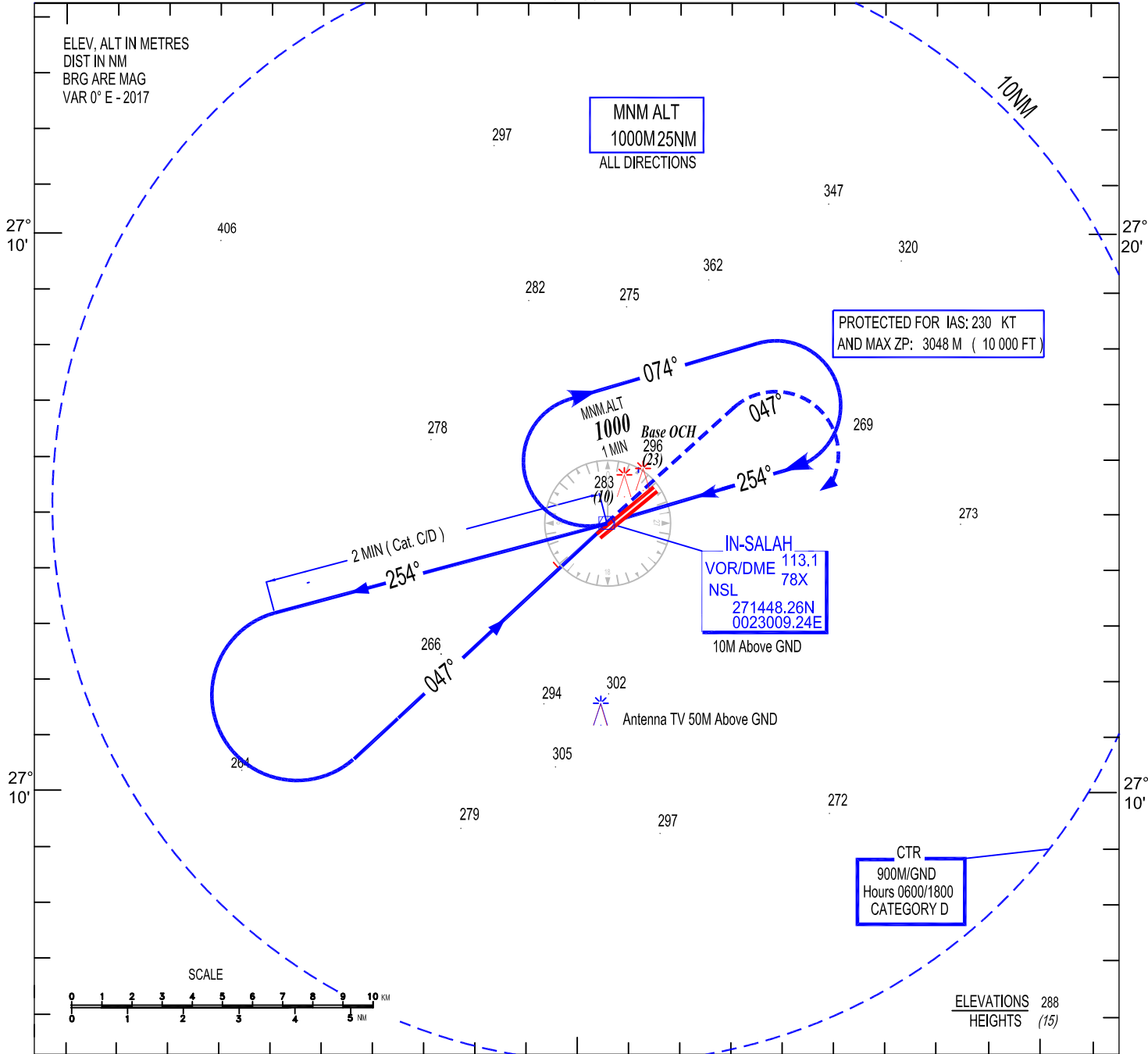
AERODROME ELEV 273 m  
HEIGHTS RELATED TO  
AD ELEV

TWR : 118.1, 119.7(s)

VOR RWY 05  
CAT C / D

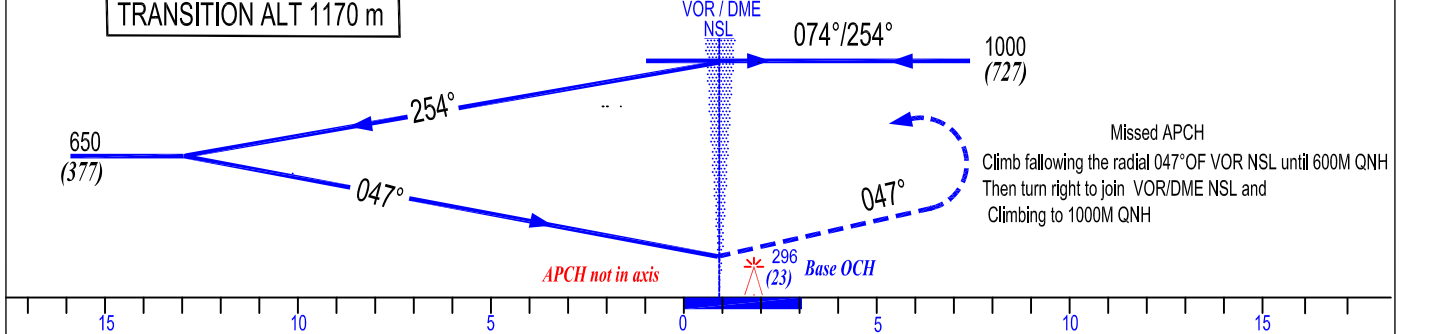
02° 20'E 02° 30'E 02° 40'E

ELEV. ALT IN METRES  
DIST IN NM  
BRG ARE MAG  
VAR 0° E - 2017



02° 20'E 02° 30'E 02° 40'E

TRANSITION ALT 1170 m



Cat-ACFT	LOWEST ADMISSIBLES OPERATIONNAL MINIMUMS					
	VOR RWY 05			Circling		
	OCH	MDH	VH	OCH	MDH	VH
C	130 M	430 FT	2800 M	210 M	690 FT	4000 M
D	130 M	430 FT	3200 M	210 M	690 FT	4400 M