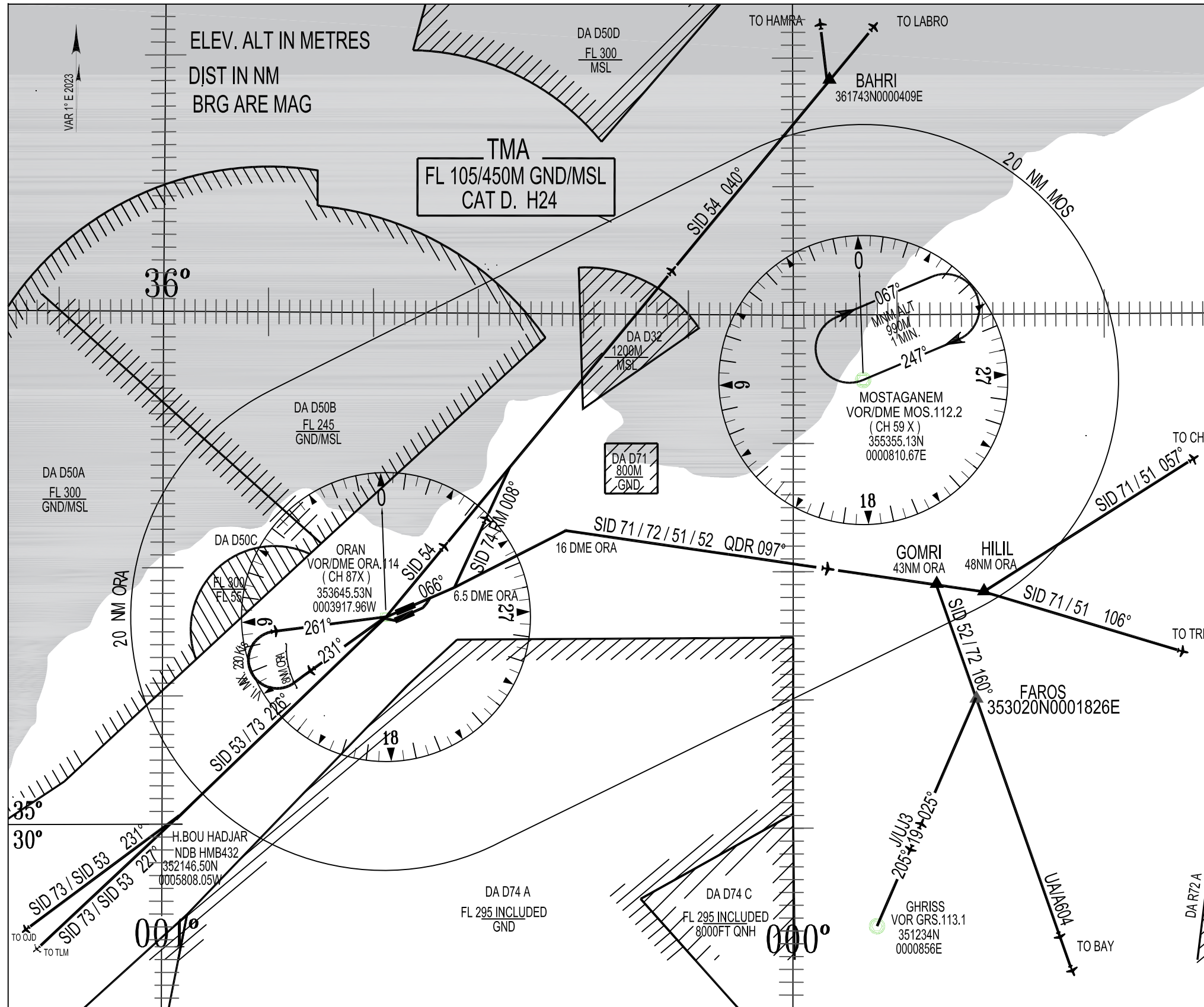


STANDARD DEPARTURE CHART
INSTRUMENT (SID) ICAO

TRANSITION ALTITUDE : 990M

APP. 128.2 - 121.1(s)
TWR. 118.1 - 119.7 (s)

ORAN / Ahmed Ben bella
RWY 07L / 25R- RWY 07R/25L



TMA ORAN
INSTRUMENT DEPARTURE PROCEDURES
ORAN/AHMED BEN BELLA

CODE	EXIT POINT	PATHWAYS
SID 71 RWY 07L/07R	HILIL (CHE)	After take-off, climb following RDL 066° from ORA to 16 DME ORA, then turn right to follow QDR 097° from ON to HILIL and heading to CHE or TRB.
*SID 51 RWY 25R/25L	or (TRB)	After take-off, intercept and follow RDL 231° ORA, reach 3000FT QNH minimum later in 8NM ORA. At 8NM from ORA, turn right (IAS Max 230 kts) to intercept RDL 261° ORA at maximum in FL 50 then climb and follow this RDL to vertical ORA then intercept and follow RDL 066° ORA to 16 DME ORA, then turn right to follow the QDR 097° from ON to HILIL and heading to CHE or TRB.
SID 72 RWY 07L/07R	GOMRI (BAY)	After take-off, climb following RDL 066° from ORA to 16 DME ORA, then turn right to follow QDR 097° from ON to GOMRI and heading to BAY or GRS.
*SID 52 RWY 25R/25L	or (GRS)	After take-off, intercept and follow RDL 231° ORA, reach 3000FT QNH minimum later in 8NM ORA. At 8NM from ORA, turn right (IAS Max 230 kts) to intercept RDL 261° ORA at maximum in FL 50 then climb and follow this RDL to vertical ORA then intercept and follow RDL 066° ORA to 16 DME ORA, then turn right to follow the QDR 097° from ON to GOMRI and heading to BAY or GRS.
SID 73 RWY 07L/07R	HMB (OJD)	After take-off, turn left to pass vertical ORA, then intercept and follow RDL 225° from ORA to HMB and heading to TLM or OJD.
SID 53 RWY 25R/25L	or (TLM)	After take-off, intercept and follow RDL 225° from ORA to HMB and heading to TLM or OJD.
SID 74 RWY 07L/07R	BAHRI (HAMRA)	After take-off, climb following RDL 066° ORA to 6.5 DME ORA, then turn left and follow RM 008° to join and follow RDL 040° ORA to BAHRI and heading to HAMRA or LABRO.
*SID 54 RWY 25R/25L	or (LABRO)	After take-off, intercept and follow RDL 231° ORA, reach 3000FT QNH minimum later in 8NM ORA. At 8NM from ORA, turn right (IAS Max 230 kts) to intercept RDL 261° ORA at maximum in FL 50 then climb and follow this RDL to vertical ORA then intercept and follow RDL 040° ORA to BAHRI, and heading to HAMRA or LABRO.

*ATS SLOPE:
A minimum climbing slope of 5% is imposed up to 8NM DME ORA to reach the minimum safety altitude in route (3000 FT QNH) for SID 51, SID 52 and SID 54 in order to avoid the most penalizing obstacle constituted by a relief of altitude 584 M (2000 FT) located at 8.6 NM DME ORA and on RDL 261° ORA.