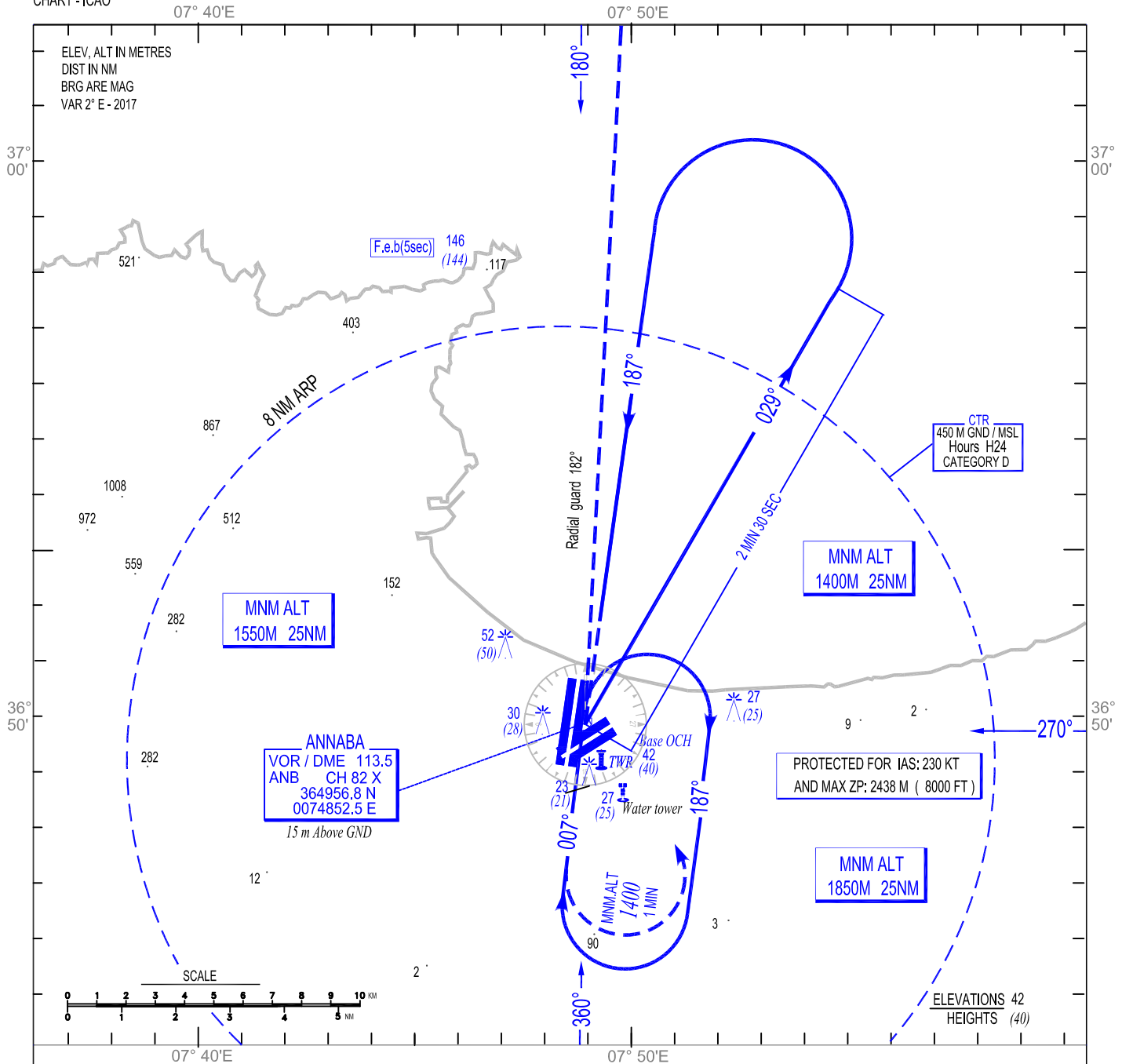


INSTRUMENT
APPROACH
CHART - ICAO

AERODROME ELEV 5 M
HEIGHTS RELATED TO
THR RWY 18- ELEV 2 M

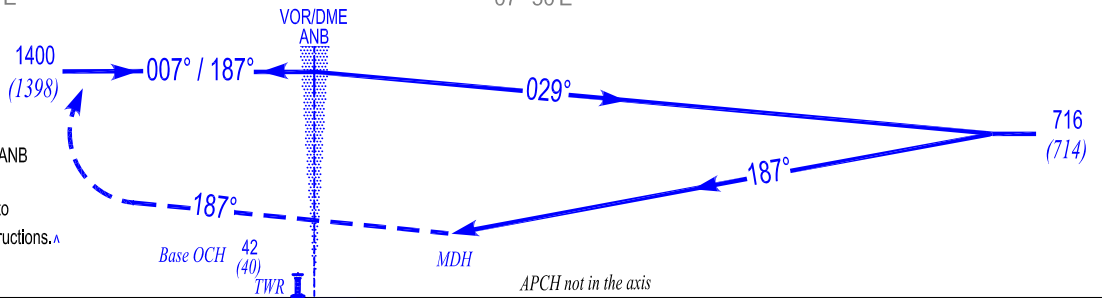
APP:119.0 - 119.7 (s)
TWR:118.7 - 119.7 (s)

VOR RWY 18
CAT C / D



TRANSITION ALT 1500 M

MISSED APCH
Climb following radial 187° VOR ANB
Until 180 M QFE then turn left
to join VOR/DME ANB climbing to
1400M QNH and follow CTL instructions.▲



Cat-ACFT	LOWEST ADMISSIBLES OPERATIONNAL MINIMUMS					
	VOR RWY 18			Circling		
	OCH	MDH	VH	OCH	MDH	VH
C	135 M	450 FT	2800 M	270 M	890 FT	5000 M
D	135 M	450 FT	3200 M	270 M	890 FT	5000 M