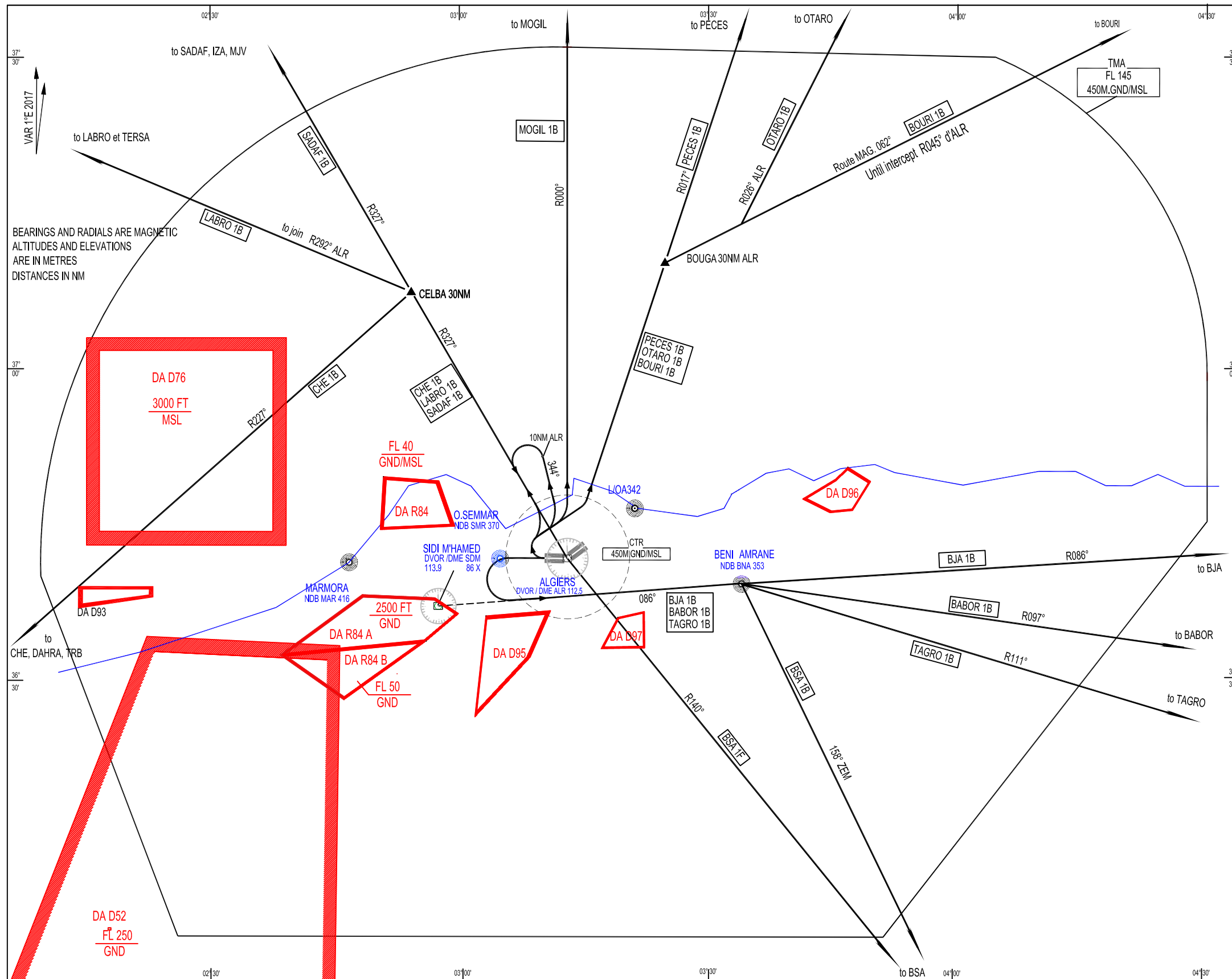


STANDARD DEPARTURE CHART  
INSTRUMENT (SID) - ICAO

TRANSITION ALTITUDE  
1200 m

TWR : 118.7 - 119.7 (s)  
APP : 121.4

RWY 27



ALGIERS TMA  
DEPARTURES PROCEDURES - ALGIERS HOUARI BOUMEDIENE  
RWY 27

CODE	EXIT POINT	PATHS
MOGIL 1B		After Take-off turn Right, intercept and follow R000° ALR to MOGIL than MJV.
PECES 1B		After Take-off turn Right, intercept and follow R017° ALR on PECES than MHN.
OTARO 1B		After Take-off turn Right, intercept and follow R017° ALR at BOUGA (30NM ALR) Turn right to join R026° ALR to OTARO
BOURI 1B		After Take-off turn Right, intercept and follow R017° ALR at BOUGA (30NM ALR) Turn right to join R045° ALR to BOURI.
BJA 1B		After Take-off maintain RWY axis to pass SMR, then turn Left intercept and follow R086° SDM to BNA, pass BNA FL70 minimum, than route to BJA
BABOR 1B		After Take-off maintain RWY axis to pass SMR, then turn Left intercept and follow R086° SDM to BNA, pass BNA FL70 minimum, than route to BABOR
TAGRO 1B		After Take-off maintain RWY axis to pass SMR, then turn Left intercept and follow R086° SDM to BNA, pass BNA FL70 minimum, than route to TAGRO
BSA 1B		After Take-off maintain RWY axis to pass SMR, then turn Left intercept and follow R086° SDM to BNA, pass BNA FL70 minimum, than route to BSA.
BSA 1F		After Take-off turn Right, intercept and follow R344° ALR, at 10NM turn left to return to R327° to ALR, pass ALR FL70 minimum than intercept R140° ALR to BSA
CHE 1B		After Take-off turn Right, intercept and follow R327° ALR at CELBA (30NM ALR) turn left on CHE to DAHRA or TRB
LABRO 1B		After Take-off turn Right, intercept and follow R327° ALR at CELBA (30NM ALR) turn left to join R292° ALR to TERSA than LABRO
SADAF 1B		After Take-off turn Right, intercept and follow R327° ALR than route to SADAF than IZA or MJV