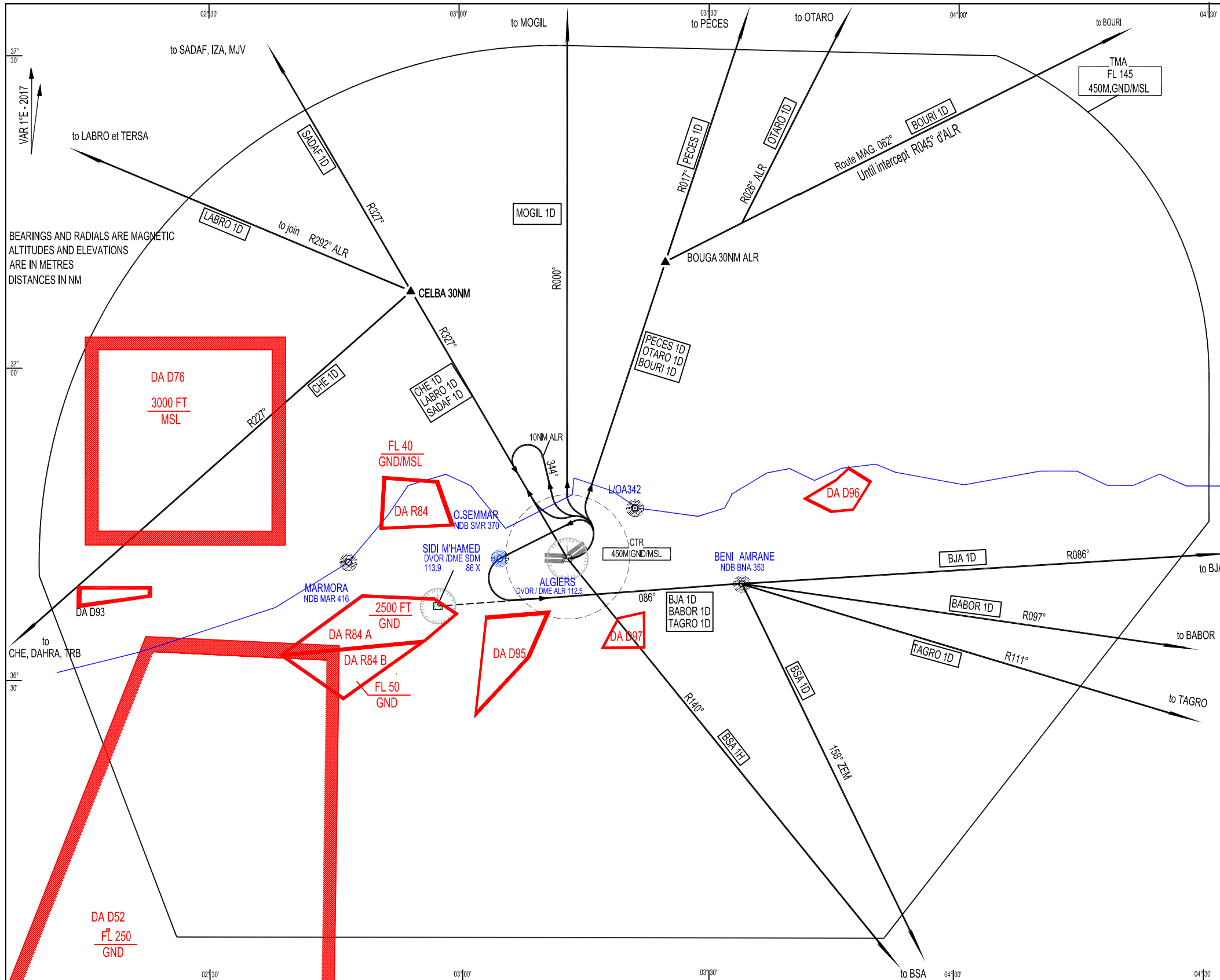


STANDARD DEPARTURE CHART
INSTRUMENT (SID) - ICAO

TRANSITION ALTITUDE
1200 m

TWR : 118.7 - 119.7 (s)
APP : 121.4

RWY 09



ALGIERS TMA
DEPARTURES PROCEDURES - ALGIERS HOUARI BOUMEDIENE
RWY 09

CODE	EXIT POINT	PATHS
MOGIL 1D		After Take-off turn left, intercept and follow R000° ALR to MOGIL
PECES 1D		After Take-off turn Left, intercept and follow R017° ALR on PECES than MHN.
OTARO 1D		After Take-off turn Left, intercept and follow R017° ALR to BOUGA (30NM ALR) Turn right RM 026° to join R 026° ALR to OTARO
BOURI 1D		After Take-off turn Left, intercept and follow R017° ALR to BOUGA (30NM ALR) Turn right RM 062° to join R045° ALR to BOURI.
BJA 1D		After Take-off turn left and procede to SMR, pass on SMR FL 40 minimum than turn Left to intercept and follow R086° SDM to BNA pass BNA FL70 minimum, than route to BJA.
BABOR 1D		After Take-off turn left and procede to SMR, pass on SMR FL 40 minimum than turn Left to intercept and follow R086° SDM to BNA pass BNA FL70 minimum, than route to BABOR.
TAGRO 1D		After Take-off turn left and procede to SMR, pass on SMR FL 40 minimum than turn Left to intercept and follow R086° SDM to BNA pass BNA FL70 minimum, than route to TAGRO.
BSA 1D		After Take-off turn left and procede to SMR, pass on SMR FL 40 minimum than turn Left to intercept and follow R086° SDM to BNA pass BNA FL70 minimum, than route to BSA
BSA 1H		After Take-off turn left, intercept and follow R344° ALR, at 10NM turn left to return to R327° to ALR, pass ALR FL70 minimum than join R140° ALR to BSA
CHE 1D		After Take-off turn left, intercept and follow R327° at CELBA (30NM ALR) turn left on CHE to DAHRA or TRB
LABRO 1D		After Take-off turn left, intercept and follow R327° at CELBA (30NM ALR) turn left to join R292° ALR to TERSA than LABRO
SADAF 1D		After Take-off turn left, intercept and follow R327° ALR than route to SADAF than IZA or MJV