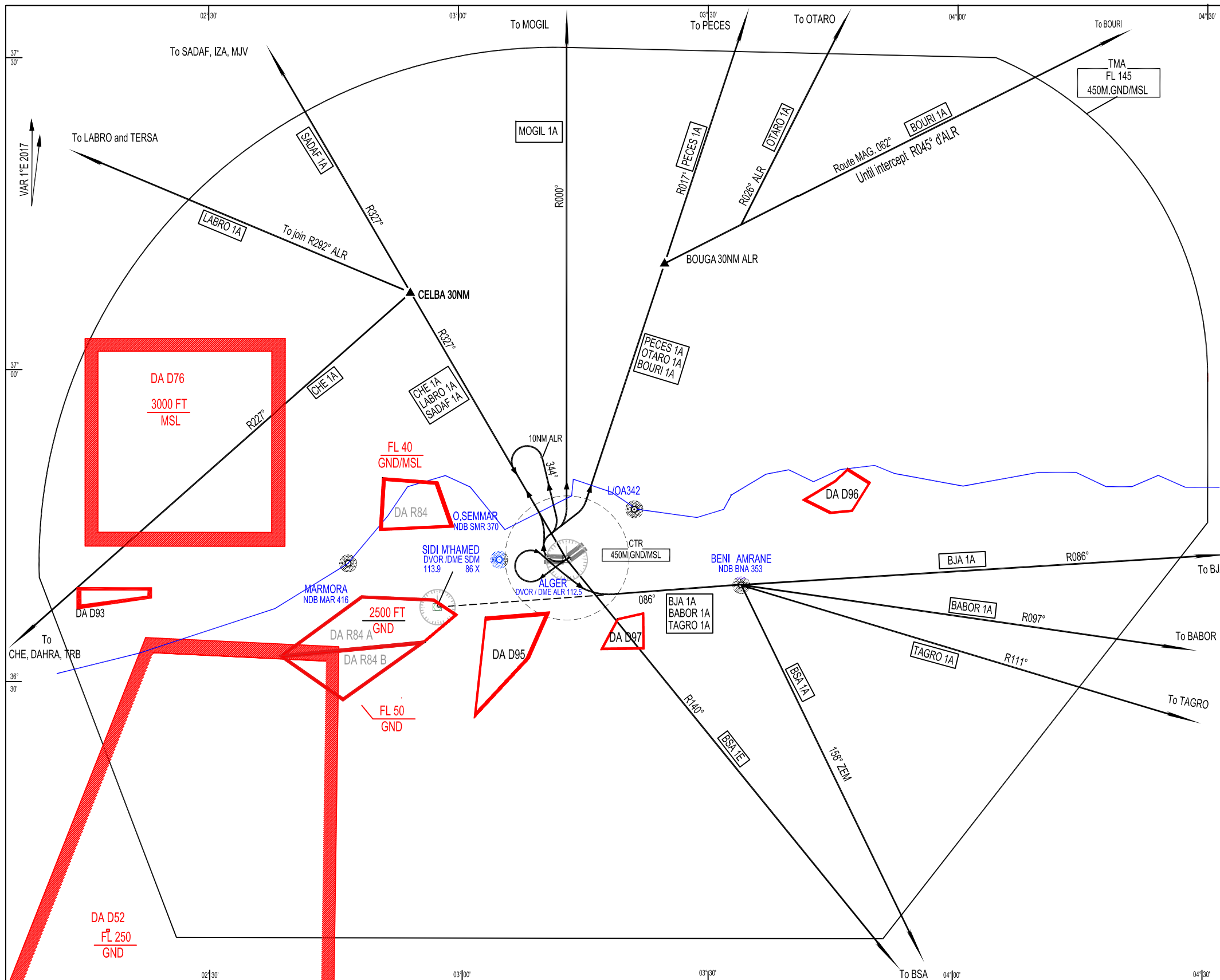


STANDARD DEPARTURE CHART
INSTRUMENT (SID) - ICAO

TRANSITION ALTITUDE
1200 m

TWR : 118,7 - 119,7 (s)
APP : 121,4

RWY 23



ALGIERS TMA		
DEPARTURES PROCEDURES - ALGIERS HOUARI BOUMEDIENE		
RWY 23		
CODE	EXIT POINT	PATHS
MOGIL 1A		After Take-off turn right, intercept and follow R000° ALR to MOGIL than MJV.
PECES 1A		After Take-off turn right, intercept and follow R017° ALR on PECES than MHN.
OTARO 1A		After Take-off turn right, intercept and follow R017° ALR to BOUGA (30NM ALR) Turn right to join R026 ALR to OTARO.
BOURI 1A		After Take-off turn right, intercept and follow R017° ALR to BOUGA (30NM ALR) Turn right to join R045° ALR to BOURI.
BJA 1A		After Take-off maintain RWY axis to pass ALR, get away on R232° ALR at a distance of 4NM turn right, intercept and follow R086° SDM to BNA pass BNA FL70 minimum than route to BJA.
BABOR 1A		After Take-off maintain RWY axis to pass ALR, get away on R232° ALR at a distance of 4NM turn right, intercept and follow R086° SDM to BNA pass BNA FL70 minimum than route to BABOR.
TAGRO 1A		After Take-off maintain RWY axis to pass ALR, get away on R232° ALR at a distance of 4NM turn right, intercept and follow R086° SDM to BNA pass BNA FL70 minimum than route to TAGRO.
BSA 1A		After Take-off maintain RWY axis to pass ALR, get away on R232° ALR at a distance of 4NM turn right, intercept and follow R086° SDM to BNA pass BNA FL70 minimum than route to BSA.
BSA 1E		After Take-off turn right, intercept and follow R344° ALR, at 10NM turn right to back on R327° to ALR, pass ALR FL70 minimum than join R140° ALR to BSA
CHE 1A		After Take-off turn right, intercept and follow R327° ALR at CELBA (30NM) ALR turn right on CHE to DAHRA or TRB
LABRO 1A		After Take-off turn right, intercept and follow R327° ALR at CELBA (30NM) ALR turn right on R292° ALR to TERSA than LABRO
SADAF 1A		After Take-off turn right, intercept and follow R327° ALR in route to SADAF than IZA or MJV