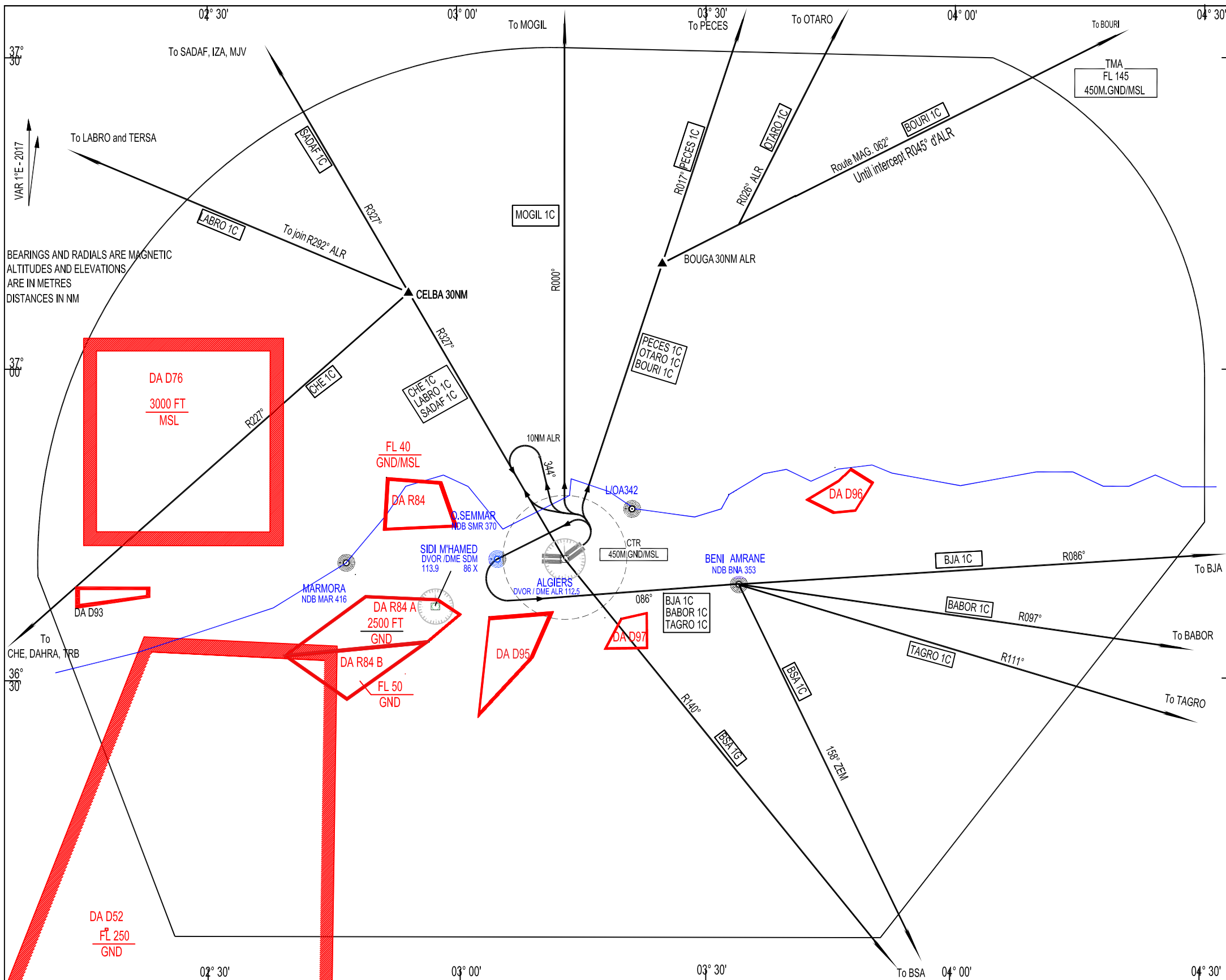


STANDARD DEPARTURE CHART  
INSTRUMENT (SID) - ICAO

TRANSITION ALTITUDE  
1200 m

TWR : 118.7 - 119.7 (s)  
APP : 121.4

RWY 05



ALGIERS TMA  
DEPARTURES PROCEDURES - ALGIERS HOUARI BOUMEDIENE  
RWY 05

CODE	EXIT POINT	PATHS
MOGIL 1C		After Take-off turn left, intercept and follow R000° ALR to MOGIL.
PECES 1C		After Take-off turn left, intercept and follow R017° ALR on PECES than MHN.
OTARO 1C		After Take-off turn left, intercept and follow R017° ALR to BOUGA (30NM ALR) Turn right RM 062° to join R026° ALR to OTARO
BOURI 1C		After Take-off turn left, intercept and follow R017° ALR to BOUGA (30NM ALR) Turn right RM 062° to join R045° ALR to BOURI.
BJA 1C		After Take-off turn left and procede to SMR, pass on SMR FL 40 minimum than turn left to intercept and follow R086° SDM to BNA pass BNA FL70 minimum, than route to BJA.
BABOR 1C		After Take-off turn left and procede to SMR, pass on SMR FL 40 minimum than turn left to intercept and follow R086° SDM to BNA pass BNA FL70 minimum, than route to BABOR.
TAGRO 1C		After Take-off turn left and procede to SMR, pass on SMR FL 40 minimum than turn left to intercept and follow R086° SDM to BNA pass BNA FL70 minimum, than route to TAGRO.
BSA 1C		After Take-off turn left and procede to SMR, pass on SMR FL40 minimum to intercept and follow R086° SDM to BNA, pass BNA FL70 minimum, than route to BSA
BSA 1G		After Take-off turn left, intercept and follow R344° ALR, at 10NM turn left to back on R327° to ALR, pass ALR FL70 minimum than join R140° ALR to BSA
CHE 1C		After Take-off turn left, intercept and follow R327° at CELBA (30NM ALR) turn left on CHE to DAHRA or TRB
LABRO 1C		After Take-off turn left, intercept and follow R327° at CELBA (30NM ALR) turn left pour to join R292° ALR to TERSA than LABRO
SADAF 1C		After Take-off turn left, intercept and follow R327° ALR in route to SADAF than IZA or MJV