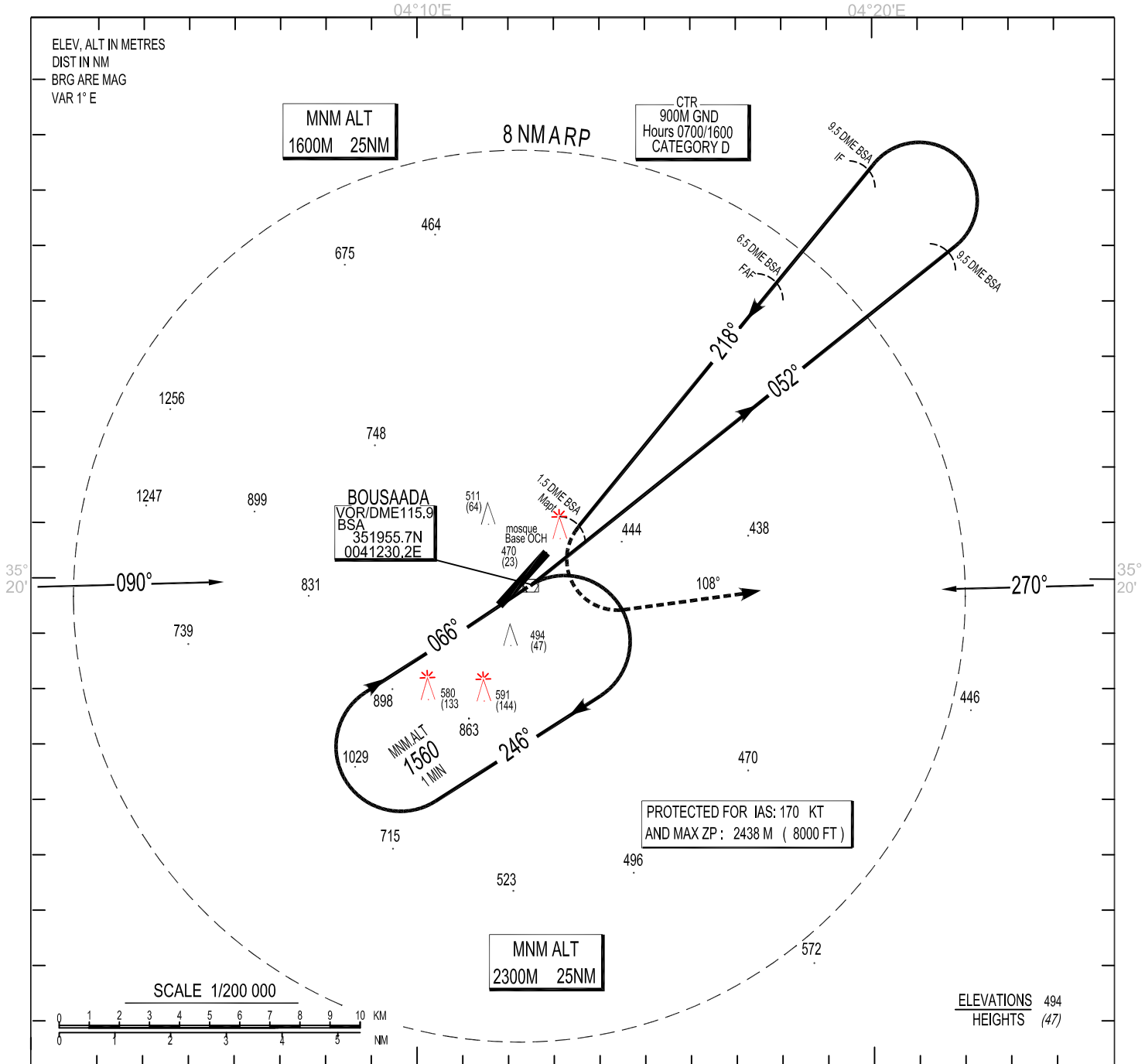


INSTRUMENT
APPROACH
CHART - ICAO

AERODROME ELEV 459 m
HEIGHTS RELATED TO
THR RWY 22- ELEV 447 m

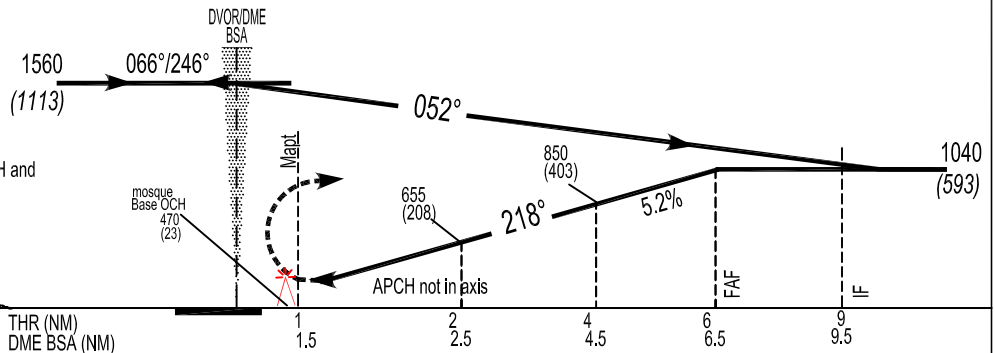
TWR : 118.1

VOR/DME RWY 22
CAT A / B



TRANSITION ALT 1560 m

MISSED APCH
At MAPT turn left to intercept
and follow radial 108° VOR BSA and climb 1560 M QNH and
follow the control instructions.



LOWEST ADMISSIBLE OPERATIONAL MINIMUMS

| ACFT CAT | DVOR/DME RWY 22 | | | CIRCLING IN SOUTH EAST | | |
|-------------|-----------------|--------|--------|------------------------|---------|--------|
| | OCH | MDH | VH | OCH | MDH | VH |
| A | 135 M | 450 FT | 2100 M | 240M | 790 FT | 3600 M |
| B | 135 M | 450 FT | 2100 M | 425M | 1400 FT | 5000 M |